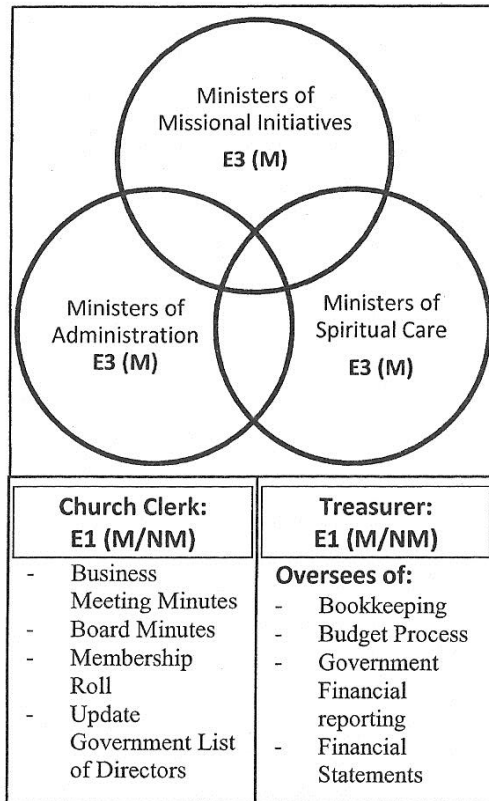


Discussion Document: ARBC Governance Model - May 14/12

Board



<p>Board: E9 (M)</p>
<p>Accountable to:</p> <ol style="list-style-type: none"> 1. Church Membership 2. The Ontario Incorporations Act RSO 1990 C38
<p>Oversees:</p> <ul style="list-style-type: none"> - Prayer - Benevolent Fund - Bylaw compliance - Policies & Procedures - Church Business Meetings - Personnel - Plan to Protect Program - Nominations Report - Fund Raising - Insurance - Schedule for Narthex,

<p><u>Legend:</u></p>
<ul style="list-style-type: none"> • “A” = Appointed by Board or committee • “E” = Elected by membership, (3 = number of positions) • “M” = active member, • “NM” = non-member, and • “PP” = Plan to Protect requirements to be met. • “?” = Number to be determined

<p>Nominating Advisors: A3 (M/NM)</p> <p>Oversees of:</p> <ul style="list-style-type: none"> - Slate of Nominations 	<p>Privacy Officer: E1 (M)</p> <p>Oversees of:</p> <ul style="list-style-type: none"> - Required by Law to oversee Privacy Policy 	<p>Accessibility Committee: A3 (M/NM)</p> <p>Oversees of:</p> <ul style="list-style-type: none"> - Required by Law to oversee Accessibility Policy
---	---	--

<p>Accessibility Officer: E1 (M/NM)</p>
<p>Oversees of:</p> <ul style="list-style-type: none"> - Accessibility Committee